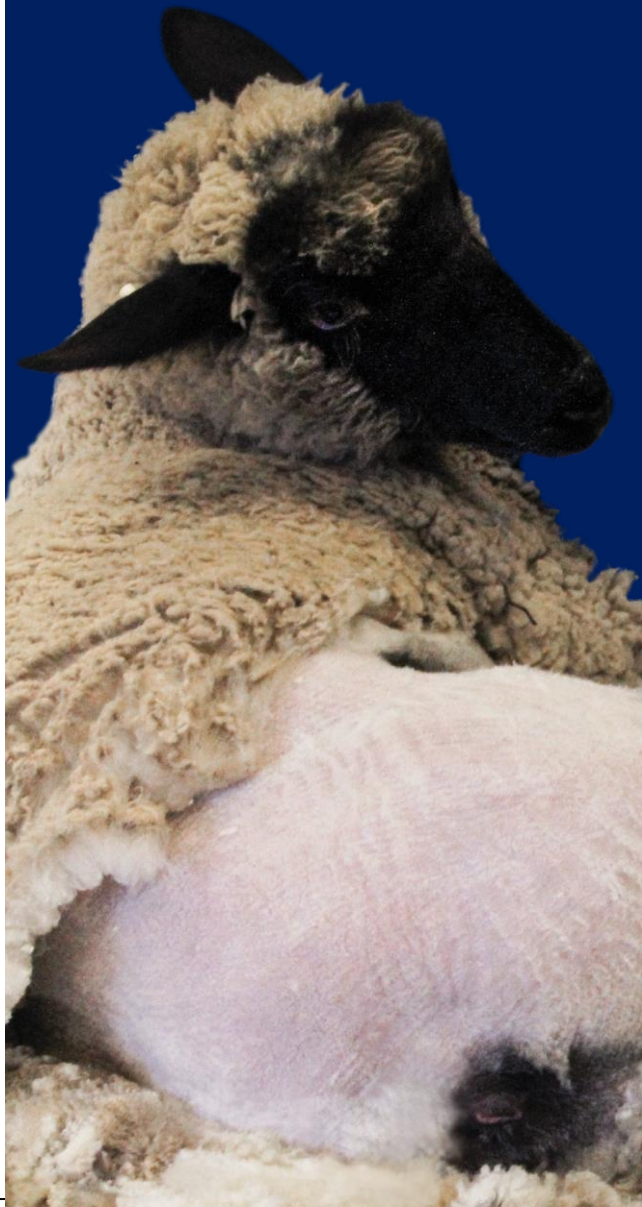


2022 Sheep Shearing School

WED., MARCH 2 - THURS.,
MARCH 3, 2022

George Washington Carver Farm
3804 Bald Hill Road, Jefferson
City, MO, 65101

\$100 per person



Lincoln University Cooperative Extension

Please bring your own equipment if you have it.
Some equipment will be available to borrow.
Wear comfortable clothes and proper shoes.

Agenda

Wednesday, March 2, 2022
1 PM-5 PM

Welcome and Introductions

Doug Moeller	Amy Bax	Guy Frazier
Farm Assistant	Extension Associate	Instructor
Lincoln University	Lincoln University	Hallsville, MO

Care of Equipment

- Learn to care for and assemble sheep-shearing equipment.
- Learn comparisons and parts of the equipment.
- Learn to properly sharpen parts of the equipment.
- Learn the importance of oiling shears, types of oils, and frequency of oiling for quality shearing.

Care of Animals and Proper Setup

- Learn to properly set up a sheep for shearing.
- Learn the pattern that is most efficient for shearing.
- Learn where to begin and end when shearing a sheep.
- Learn to separate the fleece prior to bagging.
- Learn to setup the bags to fill with fleeces.
- Learn to position the animal for the most efficient shearing.

Thursday, March 3, 2022
8 AM-NOON

Review and shear sheep

NOON | Working lunch (included in registration cost)

- Learn to manage/control parasites.

1 PM-5 PM

Continue to Shear Sheep

- Guy Frazier, Facilitator

5 PM

Clean Up and Adjourn

*If you need a reasonable accommodation to participate in this event,
please contact Amy Bax at BaxA2@LincolnU.edu
no later than February 15, 2022.*

*Lincoln University of Missouri offers its programs to persons
regardless of race, color, national origin, sex, age, religion, or
disability. Lincoln University is an equal opportunity employer.*